

RABBITS, CAVIES, POULTRY, & DOGS

JUNIOR ALL BREED BREEDING RABBITS

Open to Junior residents of Imperial County



See “**SCHEDULE – LIVESTOCK**”

1. Entry fee of \$15.00 per entry is due. (Limit one entry per primary exhibitor)
2. This show is recognized by the American Rabbit Breeders Association and is an Official ARBA Youth Sanction Show. Questions regarding ARBA membership may be directed to: Brad Boyce, Executive Director ARBA, Box 5667, Bloomington, IL 61702-5667.
3. Animals must be owned by the exhibitor for 60 consecutive days prior to the opening day of the fair.
4. Animals may be sifted. Animal must be free of unsightly medical disorders. Sick or unruly animals shall be grounds for disqualification, and exhibitor may be asked to remove the animal from the grounds. Determination will be made by the livestock superintendent.
5. At the judge's discretion, a rabbit may be disqualified from competition because of temporary or curable defects or viciousness.
6. Rabbits must be shown in their natural condition.
7. Cage locks are NOT allowed. Only zip-ties may be used, but must be removed prior to judging. Failure to do so will prevent animal from being exhibited.
8. EACH EXHIBITOR IS RESPONSIBLE FOR FEEDING AND WATERING their animals the entire time they are on the fairgrounds. If the exhibitor is not available, it is his or her responsibility to have a sibling or fellow organization member take care of the animal. Violation of this rule subjects exhibitor to disqualification and may result in loss of premiums and imposition of a fine.
9. All rabbits must be identified by permanent ear markings in the left ear conforming with the information on the entry form. **No two animals in the same class, owned by one exhibitor, may have the same identification markings.** Animals not marked with legible and permanent tattoo, or animals with duplicate markings, will be disqualified. Animals must be tattooed prior to arrival on the fair grounds and ears must be free of excess ink.
10. All animals, except those exhibited in the PRIMARY Youth Class, must be purebred.
11. Positively NO breeding of animals permitted during the fair.
12. PRIMARY Youth Classes are not eligible to compete for Best in Show, Reserve in Show, Best of Breed or Best Opposite of Breed, or Auction sales or Barn Sales. Only participant ribbons will be given to PRIMARY Youth Classes. No premiums will be awarded.
13. **Entries in “All Other Varieties” and “All Varieties” classes must include the animal's breed and/or color on the entry form.** The miscellaneous division of Heavyweight Breed and Lightweight Breed will apply to all standard breeds as prescribed by the latest edition of the *American Rabbit Breeder Assn., Standard of Perfection*. At the judges discretion any rabbits being shown in Heavyweight or Lightweight miscellaneous divisions may be placed into breed separations and/or variety separations to allow to be judged for ARBA regulations. These animals will be allowed for auction separation of original entry division.
14. All animals will be brought to show table by junior owner or junior assignee.
15. All other rules pertaining to the Junior Livestock Show in general and the Breeding Rabbit Show will apply
16. At the discretion of the judge, breeds exhibiting 5 or more of 1 sex or variety may be judged in a “group” class.
17. Stall card must be displayed above pen or stall.
18. AMERICAN SYSTEM OF JUDGING
19. No cash award. Ribbons only, 1st – 3rd
20. The only animals that are eligible for Auction are those receiving a 1st or higher. All other awards are eligible for Barn sales. Disqualified animals are not eligible for Auction or Barn sales.

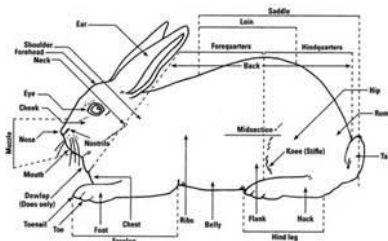
RABBIT SHOW AWARDS

Best of Show	Belt Buckle
Reserve of Show	Belt Buckle
Best of Breed & Best Opposite of Breed.....	Rosette
(Only Breeds listed in Handbook)	

RABBITS, CAVIES, POULTRY, & DOGS

JUNIOR ALL BREED BREEDING RABBITS

Open to Junior residents of Imperial County



Heavyweight Rabbits

-Definitions-

Senior Buck & Senior Doe 8 mo. of age and over
 Inter. Buck & Inter. Doe..... 6 mo. and under 8 mo. of age
 Junior Buck & Junior Doe Under 6 mo. of age

Div.	Breed & Variety	Sr. Buck Class	Sr. Doe Class	Int. Buck Class	Int. Doe Class	Jr. Buck Class	Jr. Doe Class
600	Californian	1.1	1.2	1.3	1.4	1.5	1.6
601	American						
	AV	1.1	1.2	1.3	1.4	1.5	1.6
602	New Zealand, AV	1.1	1.2	1.3	1.4	1.5	1.6
603	Satin-						
	AV	1.1	1.2	1.3	1.4	1.5	1.6
604	Champagne D'Argent						
	Solid	1.1	1.2	1.3	1.4	1.5	1.6
	Broken	2.1	2.2	2.3	2.4	2.5	2.6
605	Misc. any other breed or Variety not listed						
	Specify Breed & Variety	1.1	1.2	1.3	1.4	1.5	1.6

Lightweight Rabbits

-Definitions-

Senior Buck & Senior Doe 6 mo. of age and over
 Junior Buck & Junior Doe Under 6 mo. of age

Div.	Breed & Variety	Sr. Buck Class	Sr. Doe Class	Jr. Buck Class	Jr. Doe Class				
606	Lionhead-AV	1.1	1.2	1.5	1.6				
607	Dutch								
	Black	1.1	1.2	1.5	1.6				
	AOV	2.1	2.2	2.5	2.6				
608	Himalayan								
	Black	1.1	1.2	1.5	1.6				
	Chocolate	2.1	2.2	2.5	2.6				
	Blue	3.1	3.2	3.5	3.6				
	Lilac	4.1	4.2	4.5	4.6				
609	Holland Lop								
	Broken	1.1	1.2	1.5	1.6				
	Solid	2.1	2.2	2.5	2.6				
610	Polish								
	Black	1.1	1.2	1.5	1.6				
	Blue	2.1	2.2	2.5	2.6				
	Broken	3.1	3.2	3.5	3.6				
	AOV	4.1	4.2	4.5	4.6				
611	Mini Lop								
	Broken			1.1	1.2	1.5	1.6		
	Solid			2.1	2.2	2.5	2.6		
612	Mini Rex								
	Black			1.1	1.2	1.5	1.6		
	Broken			2.1	2.2	2.5	2.6		
	Castor			3.1	3.2	3.5	3.6		
	Chinchilla			4.1	4.2	4.5	4.6		
	White			5.1	5.2	5.5	5.6		
	AOV			6.1	6.2	6.5	6.6		
613	Netherland Dwarf								
	Group 1 Self			1.1	1.2	1.5	1.6		
	Group 2 Shaded			2.1	2.2	2.5	2.6		
	Group 3 Agouti			3.1	3.2	3.5	3.6		
	Group 4 Tan Pattern			4.1	4.2	4.5	4.6		
	Group 5 A.O.V.			5.1	5.2	5.5	5.6		
614	Tans								
	Black			1.1	1.2	1.5	1.6		
	A.O.V.			2.1	2.2	2.5	2.6		
615	Mini Satin								
	White			1.1	1.2	1.5	1.6		
	AOV			2.1	2.2	2.5	2.6		
616	Harlequin								
	Japanese			1.1	1.2	1.5	1.6		
	Magpie			2.1	2.2	2.5	2.6		
617	Miscellaneous , any other lightweight breed or variety not listed.								
	Specify breed and variety			1.1	1.2	1.5	1.6		

PRIMARY YOUTH CLASS

This division is open to exhibitors 5-8 years of age, who are members of 4-H/Grange/Independent organization who reside in the Imperial County. They are not eligible for auction, barn sales, Best of Show, Reserve of Show, Best of Breed or Best Opposite of Breed. No premiums offered, only participant ribbons.

Div.	Breed & Variety	Sr. Buck Class	Sr. Doe Class	Int. Buck Class	Int. Doe Class	Jr. Buck Class	Jr. Doe Class
618	Primary Youth	1.1	1.2	1.3	1.4	1.5	1.6
	Specify Breed						

RABBITS, CAVIES, POULTRY, & DOGS

DOE AND LITTER

Open to Junior residents of Imperial County



See “**SCHEDULE – LIVESTOCK**”

1. Entry fee of \$15.00 per entry is due.
2. Class is open to youth breeders breeding projects. The Doe entered in this class may not be shown in breed class, but may be used for showmanship. Pedigrees must be exhibited with entry. Gold Ribbon winner must be sold in Small Animal Auction. Blue Ribbon winners may sell in Barn Sale as a group.
3. Primary Youth ages 5-8 are not eligible to enter.
4. Litter need not be tattooed.
5. Danish system of Judging – No Cash Awards. Ribbons only.
6. Stall card must be displayed above pen or stall.

DOE & LITTER AWARDS

Grand Champion Rosette
Reserve Grand Champion Rosette

Division 620: Doe and Litter

Class 1: Heavyweight Breed - Doe with 4-8 bunnies, 4-8 weeks old.

Class 2: Lightweight Breed - Doe with at least 3 bunnies, 4-8 weeks old.

Division 621: Rabbit Showmanship

See Junior Livestock Showmanship & Round Robin for details

JUNIOR RABBIT MEAT PENS

Open to Junior residents of Imperial County



See “**SCHEDULE – LIVESTOCK**”

1. Entry fee of \$15.00 per entry is due. (Limit one entry per primary exhibitor)
2. A single entry will consist of three rabbits. Exhibitor may enter up to three meat pens; however, only one may sell at auction.
3. This show is recognized by the American Rabbit Breeders Association and is an Official ARBA Youth Sanction Show. Questions regarding ARBA membership may be directed to: Brad Boyce, Executive Director ARBA, Box 5667, Bloomington, IL 61702-5667.
4. All animals must be identified by permanent ear markings before entering the fairgrounds. Ear markings must conform to entry form.
5. Colors must be listed on entry form. Entries in “All Other Varieties” and “All Varieties” classes must include the animal’s breed and/or color on the entry form.
6. Purebred meat pens all three rabbits must be the same breed and variety. Grade meat pens of the same cross-breed and variety.
7. Meat pens must be bred by exhibitor (exhibitor must own at least one parent).
8. Animals must be under 70 days old on judging day.
9. Each rabbit in the pen must weigh at least 3 pounds, but not more than 5 pounds.
10. Grand Champion, Reserve Grand Champion, and all Gold meat pens must sell in Junior Livestock Small Animal Auction. All others may sell in Barn.
11. Rabbits must be earmarked to match the entry form *before* they enter the fairgrounds.
12. Animals entered as a meat pen are not eligible for any other classes at the fair.
13. Stall card must be displayed above pen or stall.
14. DANISH SYSTEM OF JUDGING
15. No cash awards. Ribbons only.
16. Primary Youth ages 5-8 are not eligible to enter.

Rabbit Meat Pen Awards

Grand Champion and Reserve Meat Pen.....Rosette and Blanket

Division 622: Rabbit Meat Pen of Three Animals

- Class 1: Purebred
- Class 2: Grade

Score Card

Meat type.....	40%	Uniformity in Body and Weight	20%
Condition of Flesh	30%	Fur	10%

RABBITS, CAVIES, POULTRY, & DOGS

JUNIOR CAVIES

Open to Junior residents of Imperial County



See **“SCHEDULE – LIVESTOCK”**

1. Entry fee of \$15.00 per entry is due. (Limit one entry per primary exhibitor)
2. All rules pertaining to the Junior Livestock Show in general and the Junior Rabbit Show in particular will be applicable to the Junior Cavies show.
3. Animals must be owned by the exhibitor for 60 consecutive days prior to the opening day of the fair.
4. All animals must be identified by permanent ear markings before entering the fairgrounds. Ear tags must conform to entry form.
5. Colors must be listed on entry form.
6. Stall card must be displayed above pen or stall.
7. AMERICAN SYSTEM OF JUDGING
8. No cash awards. Ribbons only, 1st – 3rd.
9. The only animals that are eligible for Auction are those receiving a 1st or higher. All other awards are eligible for Barn sales. Disqualified animals are not eligible for Auction or Barn sales.

Junior Cavy Awards

Best of Show Belt Buckle
 Reserve of Show Belt Buckle
 Best of Breeds & Best Opposite Rosette
 (Only for breeds listed in the handbook)

Junior Cavies: 12oz. To 22 oz. up to 4 months old---**Intermediate Cavies:** 23 oz. to 32 oz. up to 6 months old---**Senior Cavies:** over 32oz.

- Division 623: Abyssinian**
- Division 624: American**
- Division 625: American Satin**
- Division 626: Coronet**
- Division 627: Peruvian**
- Division 628: Silkie**
- Division 629: Teddy**
- Division 630: Texel**
- Division 631: White Crested**

SOLID						
Golden	6.1	6.2	6.3	6.4	6.5	6.6
Silver	7.1	7.2	7.3	7.4	7.5	7.6
AOV	8.1	8.2	8.3	8.4	8.5	8.6
AGOUTI						
Golden	9.1	9.2	9.3	9.4	9.5	9.6
Silver	10.1	10.2	10.3	10.4	10.5	10.6
Dilute	11.1	11.2	11.3	11.4	11.5	11.6
Marked						
Broken	13.1	13.2	13.3	13.4	13.5	13.6
Tortoise Shell & White	14.1	14.2	14.3	14.4	14.5	14.6
AOV	15.1	15.2	15.3	15.4	15.5	15.6
Division 633 NON RECOGNIZED BREED & VARIETIES*						
	16.1	16.2	16.3	16.4	16.5	16.6

* Non-recognized breeds and varieties will not compete for Best in Show and will not receive awards. Exhibitors must provide legible breed/variety standard for the judge.

Class:	Sr.	Sr.	Int.	Int.	Jr.	Jr.
SELF	Boar	Sow	Boar	Sow	Boar	Sow
Black	1.1	1.2	1.3	1.4	1.5	1.6
Red	2.1	2.2	2.3	2.4	2.5	2.6
Cream	3.1	3.2	3.3	3.4	3.5	3.6
White	4.1	4.2	4.3	4.4	4.5	4.6
AOV	5.1	5.2	5.3	5.4	5.5	5.6

PRIMARY YOUTH CLASS

This division is open to exhibitors 5-8 years of age, who are members of a 4-H/Grange/Independent organization who reside in the Imperial County. They are not eligible for auction, barn sales, Best of Show, Reserve of Show, Best of Breed or Best Opposite of Breed. No premiums offered, only participant ribbons.

Div.	Sr.	Sr.	Int.	Int.	Jr.	Jr.
Class	Boar	Sow	Boar	Sow	Boar	Sow
Class	Class	Class	Class	Class	Class	Class
637 Primary Youth	1.1	1.2	1.3	1.4	1.5	1.6

RABBITS, CAVIES, POULTRY, & DOGS

CAVY SOW & LITTER

Open to Junior residents of Imperial County



See “**SCHEDULE – LIVESTOCK**”

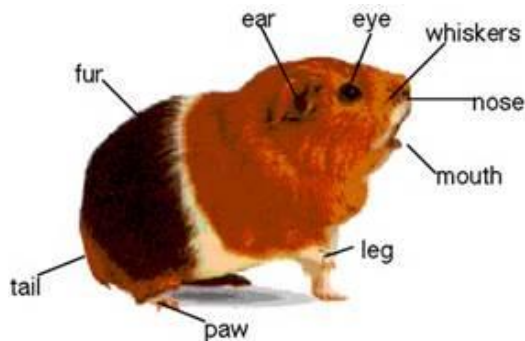
1. Entry Fee of \$15.00 is due
2. Class is open to youth breeders breeding projects. The sow entered in this class may not be shown in breed class, but may be used for showmanship.
3. Animals must be owned by the exhibitor for 60 consecutive days prior to the opening day of the fair.
4. The litter need not be tagged.
5. DANISH SYSTEM OF JUDGING
6. No cash awards. Ribbons only.
7. Stall card must be displayed above pen or stall.
8. Sow & litter are not eligible for Auction or Barn Sales
9. Primary Youth ages 5-8 are not eligible to enter.

Sow & Litter Awards

Grand Champion Rosette
Reserve Grand Champion Rosette

Division 634: Sow and Litter

Class 1: Sow with at least 1 pup ages 2-4 weeks old



Division 636: Junior Cavy Showmanship

See Junior Livestock Showmanship & Round Robin for details

RABBITS, CAVIES, POULTRY, & DOGS

JUNIOR BREEDING CHICKENS

Open to Junior residents of Imperial County



See “**SCHEDULE – LIVESTOCK**”

Due to New Castle and Asian Flu Outbreak, all breeds must be examined by licensed federal or state inspector prior to entering fair grounds and being cooped. The federal or state government may cancel any poultry division at any time as ordered. Should show be cancelled prior to fair, but after entries close, entry fees will be refunded.

1. Entry fee of \$15.00 per entry is due. (Limit one entry per primary exhibitor)
2. All birds must be banded and bands must match entry forms.
3. Animals must be owned by the exhibitor for 60 consecutive days prior to the opening day of the fair.
4. Each animal may only be entered in one division, and may not be judged in more than on division.
5. Each exhibitor is responsible for providing feed and water receptacles for his/her birds.
6. Each exhibitor is responsible for feeding and watering their animals the entire time they are on the fairgrounds. If the exhibitor is not available, it is his/her responsibility to have another family or organization member take care of the animals. Violation of this rule subjects exhibitor to disqualification and may result in loss of premiums and/or imposition of a fine.
7. Exhibitors are responsible for maintaining pen and barn area cleanliness.
8. Birds should be clean when they arrive at the fair and kept clean throughout the fair.
9. All animals will be sifted before entering the fairgrounds. Birds must be free of parasites and unsightly medical disorders. Sick or unruly animals shall be grounds for disqualification, and the exhibitor may be asked to remove the animal from the grounds. Determination will be made by the sifter or by the livestock superintendent. The sifter's final decision is undisputable and may not be protested.
10. ASV will designate Any Standard Variety and AOSV will designate Any Other Standard Variety. Entries in these divisions must include the variety on the entry form.
11. Any standard breed or variety not specifically listed may be judged as one division regardless of number of entries, breed, or variety. The judge will make determination at the time of judging. The judge's final decision is undisputable and may not be protested.
12. Stall cards must be displayed above pen or stall.
13. American System of Judging
14. No cash awards. 1st – 3rd
15. The only animals that are eligible for Auction are those receiving a 1st or higher. All other awards are eligible for Barn sales. Disqualified animals are not eligible for Auction or Barn sales.

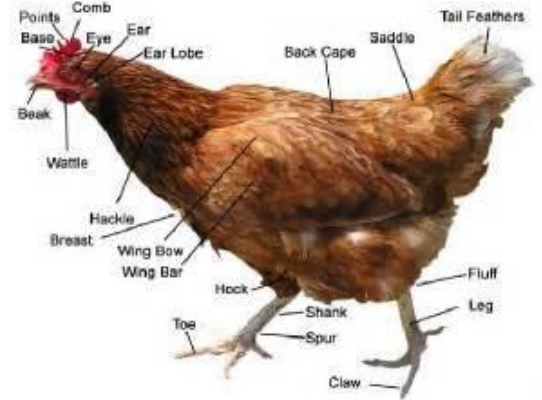
Junior Breeding Poultry Awards

Best of Breed.....	Rosette
Reserve of Breed.....	Rosette
Best of Show	Belt Buckle
Reserve of Show	Belt Buckle

RABBITS, CAVIES, POULTRY, & DOGS

JUNIOR BREEDING CHICKENS

Open to Junior residents of Imperial County



Classes 1-4 apply to all divisions in the Jr. Breeding Poultry Department

- Class 1: Cock - male one year and older
- Class 2: Hen - female one year and older
- Class 3: Cockerel - male under one year of age
- Class 4: Pullet - female under one year of age

- ASV – Any Standard Variety
- AOSV – Any Other Standard Variety
- AOSB – Any Other Standard Breed
- SC – Single Comb
- RC – Rose Comb
- AOC – All Other Combs
- AV-All Varieties

Large Poultry

American Breeds

- Division 650: Rhode Island Red (SC Comb)
- Division 651: Plymouth Rock, ASV
- Division 652: Any Other Standard Breed

Asiatic Class

- Division 653: Cochin ASV
- Division 654: Any Other Standard Breed

English Class

- Division 655: Cornish, ASV
- Division 656: Any Other Standard Breed

Mediterranean Class

- Division 657: Leghorn (SC Comb)
- Division 658: Sicilian Buttercomb
- Division 659: Any Other Standard Breed

Continental Class

- Division 660: Polish, ASV
- Division 661: Hamburg, ASV
- Division 662: Any Other Standard Breed

All Other Standard Breeds

- Division 663: Games, ASV
- Division 664: Orientals, ASV
- Division 665: Any Other Standard Breed

Small Poultry

Game Bantams

- Division 666: Old English Game Bantam; Black
- Division 667: Old English Black Breasted Red
- Division 668: Old English Game Bantams AOSV
- Division 669: Modern Game Bantams ASV
- Division 670: American Game Bantams,AV

Any other Single Comb, Clean Legged – Other Than Game Bantams

- Division 671: Any Standard Variety

Rose Comb, Clean Legged - Bantams

- Division 672: Black Rose Comb
- Division 673: Sebright, ASV
- Division 674: Any Other Standard Breed

All other Combs, Clean Legged Bantams

- Division 675: Polish, ASV
- Division 676: Cornish, ASV
- Division 677: Any Other Standard Breed

Feather Legged Bantams

- Division 678: Cochin, ASV
- Division 679: Silkie, ASV
- Division 680: D' Uccle Bantam, ASV
- Division 681: Any Other Standard Breed

Domestic Turkeys

- Division 710: Turkey
- (Limit two turkeys per exhibitor, not eligible for sale)

- Class 1: Tom –male 1-2 years old
- Class 2: Hen – female 1-2 years old
- Class 3: Tom – male under 1 year old
- Class 4: Hen –female under 1 year old

PRIMARY YOUTH CLASS

This division is open to exhibitors 5-8 years of age, who are members of a 4-H/Grange/Independent who reside in the Imperial County. They are not eligible for auction, barn sales, Best of Show, Reserve of Show, Best of Breed or Best Opposite of Breed. No premiums offered, only participant ribbons.

Div.	Cock	Hen	Cockerel	Pullet
682 Primary Youth Specify Breed	1.1	1.2	1.3	1.4

JUNIOR POULTRY MEAT PENS

Open to Junior residents of Imperial County



See “**SCHEDULE – LIVESTOCK**”

Due to New Castle and Asian Flu Outbreak, all breeds must be examined by licensed federal or state inspector prior to being cooped. The federal or state government may cancel any poultry division at any time as ordered. Should show be cancelled prior to fair, but after entries close, entry fees will be refunded.

1. Entry fee of \$15.00 per entry is due. (Limit one entry per primary exhibitor)
2. Each pen will consist of 3 meat birds.
3. Any bird that is part of a meat pen may not be entered in any other division.
4. All birds must be at least 3 pounds, but not more than 5 pounds.
5. All Gold Ribbon pens will be sold in the Junior Livestock Small Animal Auction. Blue Ribbons may sell in the Barn Sales.
6. All other rules applicable to the Breeding Poultry Department will be applicable to poultry meat pens.
7. Enter in division only. Will be classed at weigh-in
8. Stall cards must be displayed above pen or stall.
9. DANISH SYSTEM OF JUDGING
10. No cash awards. Ribbons only.
11. Primary Youth ages 5-8 are not eligible to enter

Junior Poultry Meat Pen Awards

Grand Champion Meat Pen.....	Rosette and Blanket
Reserve Grand Champion Meat Pen..	Rosette and Blanket

Division 687: Poultry Meat Pen

- Class 1: Birds at least 3 lbs., but not over 4 ½ lbs.
- Class 2: Birds at least 4 ½ lbs., but not over 5 lbs.

Score Card

Symmetry	10%
Condition	10%
Wings and Shoulder	10%
Back and Spring	10%
Breast – length of keel	10%
Breast – fleshing	20%
Legs – fleshing (upper thigh – 10%; drumstick – 10%).....	20%
Skin color, texture, distribution or fat under skin	10%
Total	<u>100%</u>

Division 688: Poultry Showmanship

See Junior Livestock Showmanship & Round Robin for

RABBITS, CAVIES, POULTRY, & DOGS

JUNIOR BREEDING WATERFOWL

Open to Junior residents of Imperial County



See "SCHEDULE – LIVESTOCK"

Due to New Castle and Asian Flu Outbreak, all breeds must be examined by licensed federal or state inspector prior to being cooped. The federal or state government may cancel any poultry division at any time as ordered. Show should be cancelled prior to fair, but after entries close, entry fees will be refunded.

1. All birds must be banded and bands must match entry forms.
2. Animals must be owned by the exhibitor for 60 consecutive days prior to opening of the fair.
3. Each animal may only be entered in one division, and may not be judged in more than one division.
4. Each exhibitor is responsible for providing feed and water receptacles for his/her birds.
5. Each exhibitor is responsible for feeding and watering their animals the entire time they are on the fairgrounds. If the exhibitor is not available, it is his/her responsibility to have another family or organization member take care of the animals. Violation of this rule subjects exhibitor to disqualification and may result in loss of premiums and/or imposition of a fine.
6. Exhibitors are responsible for maintaining pen and barn area cleanliness.
7. Birds should be clean when they arrive at the fair and kept clean throughout the fair.
8. All animals will be sifted. Birds must be free of parasites and unsightly medical disorders. Sick or unruly animals shall be grounds for disqualification, and the exhibitor may be asked to remove the animal from the grounds. Determination will be made by the sifter or by the livestock superintendent. The sifter's final decision is undisputable and may not be protested.
9. ASV will designate Any Standard Variety and AOSV will designate Any Other Standard Variety. Entries in these divisions must include the variety on the entry form.
10. Any standard breed or variety not specifically listed may be judged as one division regardless of number of entries, breed, or variety. The judge will make determination at the tie of judging. The judge's final decision is undisputable and may not be protested.
11. Stall cards must be displayed above pen or stall.
12. American System of Judging
13. **Waterfowl exhibits are not eligible for auction or barn sale.**

Junior Waterfowl

Premiums Offered Per Division				
1 st	2 nd	3 rd	4 th	
\$20.00	\$16.00	\$12.00	\$8.00	
Division Grand Champion..... Rosette				
Division Reserve Grand Champion..... Rosette				
Class Grand Champion..... Rosette				
Class Placement Ribbons..... 1 st through 8 th place				
Top 2 from each class compete for Best of Division				

Must enter Division And Class	Old Drake Class	Old Duck Class	Young Drake Class	Young Duck Class
Division 689: Ducks				
Bantam	1.1	1.2	1.3	1.4
Light	2.1	2.2	2.3	2.4
Medium	3.1	3.2	3.3	3.4
Heavy	4.1	4.2	4.3	4.4

Division 695: Waterfowl Showmanship
See Junior Livestock Showmanship & Round Robin for details

www.ivexpo.com

	Old Gander Class	Old Goose Class	Young Gander Class	Young Goose Class
--	------------------	-----------------	--------------------	-------------------

Division 690: Geese

Light	5.1	5.2	5.3	5.4
Medium	6.1	6.2	6.3	6.4
Heavy	7.1	7.2	7.3	7.4

PRIMARY YOUTH CLASS

This division is open to exhibitors 5-8 years of age, who are members of a 4-H/Grange/Independent organization who reside in the Imperial County. They are not eligible for auction, barn sales, Best of Show, Reserve of Show, Best of Breed or Best Opposite of Breed. No premiums offered, only participant ribbons.

Div.	Old Drake	Old Duck	Young Drake	Young Duck
691 Primary youth Specify Breed	1.1	1.2	1.3	1.4
Div.	Old Gander	Old Goose	Young Gander	Young Goose
692 Primary Youth Specify Breed	1.1	1.2	1.3	1.4

Entry deadlines: Adult and Junior – Feb. 1st

RABBITS, CAVIES, POULTRY, & DOGS

JUNIOR WINGED WILDLIFE

Open to Junior residents of Imperial County



See **“SCHEDULE – LIVESTOCK”**

Due to New Castle and Asian Flu Outbreak, all breeds must be examined by licensed federal or state inspector prior to being cooped. The federal or state government may cancel any poultry division at any time as ordered. Should show be cancelled prior to fair, but after entries close, entry fees will be refunded.

1. Entry fee of \$15.00 per entry is due. (Limit one entry per primary exhibitor)
2. Exhibitors are responsible for feeding, watering and keeping pen area clean, daily, the entire duration of the fair. Violation of this rule will result in disqualification of exhibitor's entire entry and may result in the loss of all premiums and result in a fine.
3. Animals must be owned by the exhibitor for 60 consecutive days prior to opening of the fair.
4. Birds shall be clean when they arrive on fairgrounds and kept clean throughout the fair. Birds must be free of mites, lice, fleas and unsightly medical disorders.
5. Birds shall be tagged or banded, if possible.
6. Habitat exhibits to be judged as a division.
7. Habitat exhibits to be judged on quality of birds, plumage and how well they are presented in a natural looking setting.
8. Single birds may not be a part of Habitat exhibit.
9. Single bird entries to be judged by species only. Any standard specie not listed will be judged as one division regardless of the number of entries.
10. All exhibits are entered and shown at owner's risk. Precautions will be taken to eliminate danger and mistakes in handling and return of stock. California Mid-Winter Fair & Fiesta and its management will not be responsible for any loss, damage, accident or death of any exhibit during the show or in transit.
11. Stall cards must be displayed above pen or stall.
12. American system of judging.
13. Exhibit not eligible for auction or barn sale.
14. Due to wild nature, exhibit not eligible for showmanship.

<i>Junior Winged Wildlife</i>				
Premiums Offered Per Division				
	1 st	2 nd	3 rd	4 th
	\$20.00	\$16.00	\$12.00	\$8.00
Division Grand Champion.....	Rosette			
Division Reserve Grand Champion.....	Rosette			
Placement Ribbons.....	1 st through 8 th place			

This division is open to exhibitors 5-8 years of age, who are members of a 4-H/Grange/Independent organization who reside in the Imperial County. They are not eligible for auction, barn sales, Best of Show, Reserve of Show, Best of Breed or Best Opposite of Breed. No premiums offered, only participant ribbons.

PRIMARY YOUTH CLASS

Division 696: **Habitat Exhibit**

- Class 1: Individual
- Class 2: Group

Division 697: **Pheasants**

- Class 1: Cock
- Class 2: Hen

Division 698: **Quail, Single Bird or Group**

- Class 1: Cock, depending upon variety
- Class 2: Hen

Division 699: **Chucker**

- Class 1: Cock
- Class 2: Hen

Division 700: **Pigeons, All Variety**

- Class 1: Cock
- Class 2: Hen

Division 701: **All Other Winged Wildlife (Guineas, Peacocks, Etc.)**

- Class 1: Cock
- Class 2: Hen

RABBITS, CAVIES, POULTRY, & DOGS

DOG SHOW



See “**SCHEDULE – LIVESTOCK**”

1. Entry fee of \$25.00 per entry is due.
2. Dogs must be owned or by the family thereof and in the exhibitors possession for a period of 150 days prior to the opening day of the fair.
3. **Dogs are not allowed in livestock barns. Dogs may only be on grounds for judging and must be removed after judging is completed.**
4. All dogs must be on a leash and under control at all times, you may kennel the dog while you are on the fairgrounds.
5. All dogs must have proof of rabies vaccination with rabies tag, implanted microchip number or tattoo number, with rabies certificate.
6. Entry Form: Use small animal entry form and list dogs name and ID number where noted. The dogs ID number may be a microchip implanted into the dog or a Rabies Tag number. You must have proof of this number with you at check in. Dogs may not be shown without verification.
7. Follow all vaccination recommendations from your veterinarian.
8. Judging: The Imperial County Dog Show rules and AKC rules apply. AKC rules may be obtained from www.AKC.org.
9. Exhibitors must be on hand and ready to exhibit at the time called for judging.
10. When the dog is released at the conclusion of the show they must exit directly to the east parking lot. Dogs are not to enter or exit the fairgrounds through the main gate.
11. No dogs in season allowed on the fairgrounds.
12. Top two Junior and top two Senior Showman must compete in Small Animal Round Robin.
13. Dog Showmanship:
 - a. See Showmanship Section for complete rules.
 - b. Open only to the residents of the Imperial Valley.
 - c. Attire: Exhibitors must wear the official 4-H, or FFA uniform.
 - d. Criteria: Exhibitors will be judged on their ability to present his or her dog to the judge, cleanliness and grooming of the exhibitor and dog, and control of the animal.
 - e. Exhibitor is expected to know basic ring patterns and procedures. Patterns will be selected at the discretion of the judge and may change from class to class.
 - f. Exhibitors may enter only one division.
 - g. The judge or Fair Management may disqualify any dog for aggression or for the safety of any human or any other dog.

Division 702: **Dog Showmanship**

See [Junior Livestock Showmanship & Round Robin](#) for details

Dog Showmanship Awards

FFA Dog Showmanship.....	Rosette & Belt Buckle
Junior Dog Showmanship.....	Rosette & Belt Buckle
Senior Dog Showmanship.....	Rosette & Belt Buckle